

Evaluation of inflammation markers in mitral valve prolapse

Evaluación de los marcadores de inflamación en el prolapso de la válvula mitral

Zafer Yalim* and İbrahim Ersoy

Department of Cardiology, Afyonkarahisar Health Sciences University, Afyonkarahisar, Turkey

Abstract

Objective: Mitral valve prolapse (MVP) is the most common cause of mitral regurgitation in developed countries. The role of inflammation in the pathogenesis of MVP is still not clear. In this study, we aimed to investigate how inflammatory markers such as monocyte/high-density lipoprotein ratio (MHR), lymphocyte/monocyte ratio (LMR), neutrophil/lymphocyte ratio (NLR), and platelet/neutrophil ratio (PLR) are affected in MVP patients. **Methods:** In this retrospective study, we included 461 patients with MVP and 459 normal echocardiographic patients, matched with gender and age. Inflammatory markers and all variables were compared between the two groups. **Results:** There were no statistically significant differences in age, sex, or body mass index between the two groups. Neutrophil counts (4,960 [3,900-6,780], 4,200 [3,800-5,600], $p < 0.001$), NLR (2.488 [1.72-4.51], 1.857 [1.49-2.38], $p < 0.001$), MHR (14.9 [11.9-18.6], 12.2 [9.4-17.3], $p = 0.003$), PLR (122.4 [85-171], 104.4 [85-130], $p < 0.001$), and CRP (0.71 ± 0.50 , 0.67 ± 0.33 $p < 0.001$) were significantly higher, and LMR (3.75 [2.75-5.09], 4.06 [3.12-4.83] $p = 0.016$) was significantly lower in the MVP group than the control group, respectively. In logistic regression analysis, NLR (odds ratio [OR]: 1.058 [1.047-1.072]; $p < 0.001$), LMR (OR: 1.560 [1.211-2.522]; $p = 0.027$), and PLR (OR: 1.015 [1.012-1.019]; $p = 0.003$) were found to be independent predictors for MVP presence. **Conclusions:** These parameters can be used as a simple, low-cost, practical tool to detect inflammation in MVP.

Keywords: Mitral valve prolapse. Biomarkers. Inflammation. Neutrophil-to-lymphocyte ratio. Platelet-to-neutrophil ratio.

Resumen

Objetivo: El prolapso de la válvula mitral (MVP) es la causa más común de insuficiencia mitral en los países desarrollados. El papel de la inflamación en la patogenia del MVP aún no está claro. En este estudio, nuestro objetivo fue investigar cómo los marcadores inflamatorios como la proporción monocitos/HDL (MHR), la proporción linfocitos/monocitos (LMR), la proporción neutrófilos/linfocitos (NLR) y la proporción plaquetas/neutrófilos (PLR) se ven afectados en pacientes con MVP. **Métodos:** En este estudio retrospectivo, incluimos a 461 pacientes con PVM y 459 pacientes ecocardiográficos normales, emparejados por sexo y edad. Se compararon los marcadores inflamatorios y todas las variables entre los dos grupos. **Resultados:** No hubo diferencias estadísticamente significativas en edad, sexo o índice de masa corporal entre los dos grupos. El recuento de neutrófilos (4,960 [3,900-6,780], 4,200 [3,800-5,600], $p < 0.001$), NLR (2.488 [1.72-4.51], 1.857 [1.49-2.38], $p < 0.001$), MHR (14.9 [11.9-18.6]), (12.2 [9.4-17.3], $p = 0.003$), PLR (122.4 [85-171], 104.4 [85-130], $p < 0.001$) y PCR (0.71 ± 0.50 , 0.67 ± 0.33 $p < 0.001$) fueron significativamente mayores y LMR (3.75 [2.75-5.09], 4.06 [3.12-4.83] $p = 0.016$) fue significativamente menor en el grupo MVP que en el grupo de control, respectivamente. En el

Correspondence:

*Zafer Yalim

E-mail: zaferyalim@yahoo.com.tr

Fecha de recepción: 25-04-2021

Fecha de aceptación: 17-06-2021

DOI: 10.24875/ACM.21000127

Available online: 14-07-2021

Arch Cardiol Mex. 2022;92(2):181-188

www.archivoscardiologia.com

1405-9940 / © 2021 Instituto Nacional de Cardiología Ignacio Chávez. Published by Permanyer. This is an open access article under the CC BY-NC-ND license (<http://creativecommons.org/licenses/by-nc-nd/4.0/>).

análisis de regresión logística; NLR (OR: 1.058 [1.047-1.072]; $p < 0.001$), LMR (OR: 1.560 [1.211-2.522]; $p = 0.027$) y PLR (OR: 1.015 [1.012-1.019]; $p = 0.003$) se encontraron como predictores independientes para la presencia de MVP. Conclusiones: Estos parámetros pueden utilizarse como una herramienta sencilla, práctica y de bajo costo para detectar la inflamación en el PVM.

Palabras clave: Prolapso de la válvula mitral. Biomarcadores. Inflamación. Proporción de neutrófilos a linfocitos. Proporción de plaquetas a neutrófilos.

Introduction

Mitral valve prolapse (MVP) is the most common cause of mitral regurgitation in developed countries and affects approximately 2.4% of the population^{1,2}. Recently, there has been increased interest in MVP. It especially has serious complications including endocarditis, arrhythmias, and death. As time has progressed, the prevalence of MVP has varied in the general population. This is partially because of different definitions of MVP in recent guidelines. The current imaging definition of MVP is billowing of any portion of mitral leaflets ≥ 2 mm above the annular plane³.

MVP is a multifactorial valvular disease caused by myxomatous degeneration of valvular tissue. Myxomatous changes are defined as the expansion of the middle spongiosa layer of the valve (due to accumulation of proteoglycans), structural alterations of collagen in all components of the leaflet, and by structurally abnormal chordae^{4,5}. This process is triggered by valvular interstitial cell transformation. In general circumstances, it is inactively deployed in the spongiosa layer. Structural cells change into myofibroblasts and macrophages for unknown reasons⁶. Inflammation may play a role in this process, but it's not known currently. Some new inflammatory markers have been identified in recent years and an association has been found with many cardiovascular diseases⁷⁻¹⁰. These inflammatory markers, obtained simply from a complete blood count (CBC), were evaluated to provide useful information for many different diseases and conditions. Although some research has been carried out on elevation of new inflammatory markers in valvular heart diseases¹¹⁻¹³, no studies evaluating markers such as monocyte-to-high-density lipoprotein (HDL) ratio (MHR), lymphocyte-to-monocyte ratio (LMR), neutrophil-to-lymphocyte ratio (NLR), and platelet-to-neutrophil ratio (PLR) in MVP patients. In this study, we aimed to investigate the above-mentioned inflammatory marker levels in MVP patients.

Methods

Patient selection

In this retrospective study, patients who applied to the cardiology clinic in Afyonkarahisar Health Sciences University, between October 2012 and 2019 were enrolled. First, we identified 512 patients diagnosed as having MVP. After taking into account exclusion criteria and availability of laboratory data, 461 patients were eligible. Second, 459 patients (have normal echocardiography and without MVP) who were age- and gender-matched were included randomly from the database as the control group. A total of 920 participants were examined for further analysis.

Patients under 18 and over 85 years old, chronic inflammatory disease (such as Crohn's disease, rheumatoid arthritis, and vasculitis), heart failure, renal failure, hepatic disorders, malignancy, thyroid hormone disorders, acute coronary syndrome, developed MVP due to rheumatic valve disease, ischemic and infective endocarditis, presence of active infection, or lack of data were excluded from the study. Furthermore, the study was approved by the Institutional Local Ethics Committee (number of decision: 2019/261).

Transthoracic echocardiography (TTE)

All TTE examinations were performed using a Vivid 9 Pro System (General Electric Medical Systems, Milwaukee, Wisconsin, USA) with a 2.5 MHz phased array. Standard imaging measurements of patients were recorded, including left atrial, aortic annulus, ascending aorta, and left ventricular end-diastolic and systolic diameters. The diagnosis of MVP was based on echocardiographic criteria. Prolapse of the mitral valve is defined as an abnormal systolic displacement of one or both leaflets into the left atrium, and billowing of any portion of the mitral leaflets ≥ 2 mm above the annular plane in a long-axis view (parasternal or apical three chambers)³.

Laboratory analysis

Laboratory results of all participants were collected from patient records. Blood samples were collected after 12 h of fasting after admission to the hospital. Blood samples were centrifuged at a speed of 1600 rpm for 15 min. A Roche Cobas C501 autoanalyzer system (Roche, Rotkreuz, Switzerland) was used for all biochemical parameters (such as fasting blood glucose, serum creatinine, sodium, potassium, total cholesterol [TC], low-density lipoprotein cholesterol [LDL-C], HDL cholesterol [HDL-C], and triglyceride [TG]). Blood samples were taken into standardized tubes containing dipotassium ethylenedinitrilotetraacetic acid for CBC. An XN-2000 hematology system (Bornbarch, Norderstedt, Germany) was used for CBC analysis. Furthermore, MHR, LMR, NLR, and PLR were calculated by dividing.

Statistical analysis

Statistical analysis was conducted using SPSS software version 23.0 (SPSS, Inc., Chicago, Illinois). Variables were analyzed using visual and analytical methods to determine if they were normally distributed. Mean and standard deviation or median and interquartile ranges were used for descriptive statistics, also number and % were used for categorical variables. Chi-square test was used to compare nominal and categorical variables (gender, hypertension, diabetes, and hyperlipidemia). Parametric data were compared using t-test and non-parametric data with Mann–Whitney U-test. A two-sided $p < 0.05$ was considered statistically significant.

Univariate analysis to identify variables associated with MVP was also investigated using Chi-square, Student's t, and Mann–Whitney U tests, when appropriate. For multivariate analysis, possible factors identified with univariate analyses were further entered into logistic regression analysis to determine independent predictors of MVP presence. Hosmer-Lemeshow goodness-of-fit statistics was used to assess model fit. A 5% type-1 error level was used to infer statistical significance. Furthermore, a receiver operating characteristics curve analysis was performed to determine a cutoff value of inflammation markers in MVP, but could not find an acceptable cutoff value.

Results

The study population consisted of 461 patients who had been diagnosed as having MVP and 459 patients

in the control group. As shown from Table 1, there was no difference between the groups with respect to age, gender, hypertension, hyperlipidemia, diabetes mellitus, coronary artery disease, chronic pulmonary disease, or thyroid disease ($p > 0.05$). There were significant differences in echo findings (such as mitral regurgitation, LA size, AO diameter, and wall thickness) of the MVP and control group. All demographic and echocardiographic variables of the groups are given in Table 1.

As shown in Table 2, the MVP group had significantly more serum TC and LDL-C than the control group, whereas HDL-C level was lower ($p < 0.05$). Furthermore, neutrophil and lymphocyte count was significantly different in both groups. NLR (2.488 [1.72-4.51], 1.857 [1.49-2.38], $p < 0.001$), MHR (14.9 [11.9-18.6, 12.2 [9.4-17.3, $p = 0.003$), PLR (122.4 [85-171], 104.4 [85-130], $p < 0.001$), and C-reactive protein (0.71 ± 0.50 , 0.67 ± 0.33 $p < 0.001$) were significantly higher in the MVP group than the control group, respectively. Furthermore, LMR (3.75 [2.75-5.09], 4.06 [3.12-4.83], $p = 0.016$) was significantly lower in the MVP group than the control group. According to our study results, the changes in inflammatory cells are summarized in figure 1. Furthermore, the boxplot graphic of the NLR, MHR, and LMR results between the two groups is summarized in figure 2.

In logistic regression analysis, NLR (odds ratio [OR]: 1.058 [1.047-1.072]; $p < 0.001$), LMR (OR: 1.560 [1.211-2.522]; $p = 0.027$), and PLR (OR: 1.015 [1.012-1.019]; $p = 0.003$) were found to be independent predictors for MVP presence. The results of logistic regression analysis are presented in Table 3.

Discussion

MVP is a common valvular heart disease caused by myxomatosis transformation. Abnormal immune response and the inflammatory process can play an important role in MVP pathogenesis, but very little knowledge on the relationship of MVP with inflammatory markers has been found in the literature. This study was established to understand the underlying inflammatory aspect of MVP patients. According to our study findings, neutrophil count, NLR, PLR, and MHR were significantly higher, and LMR and lymphocyte count were significantly lower in MVP patients compared to the control group.

MVP predominantly affects middle-aged adults¹⁴. Using the currently accepted definition of MVP, the prevalence is nearly equal in men and women in some

Table 1. Baseline demographic and echocardiographic measurements of study groups

Parameters	MVP (n = 461)	Control (n = 459)	p-value
Age, years	33.75(±9.97)	33.73(±12.10)	0.980
Male, n (%)	162 (32.5)	161 (32.3)	0.945
Hypertension, n (%)	39 (4.2)	44 (4.5)	0.567
Diabetes mellitus, n (%)	20 (2.2)	27 (2.9)	0.299
Hyperlipidemia, n (%)	31 (3.4)	32 (3.5)	0.897
CAD, n (%)	31 (3.4)	27 (2.9)	0.684
COPD, n (%)	7 (0.8)	13 (1.4)	0.184
Thyroid dysfunction, n (%)	12 (1.3)	18 (2.0)	0.272
LVEF (%)	62.5 ± 4.83	62.1 ± 5.44	0.230
LVDD, mm	45.78 ± 4.69	45.95 ± 3.89	0.553
LVSD, mm	29.58 ± 4.03	29.77 ± 4.83	0.513
IVS, mm	9.80 ± 1.46	10.22 ± 1.13	<0.001*
PW, mm	9.53 ± 1.43	9.79 ± 0.98	0.002*
LA, mm	35.21 ± 5.69	34.37 ± 5.42	0.021*
Ao, mm	26.63 ± 3.70	27.79 ± 3.77	<0.001*
Degree of mitral regurgitation 0/1/2/3/4, n	169/186/75/16/15	432/16/11/0/0	<0.001*

*p < 0.05 was considered statistically significant. Ao: aortic root; CAD: coronary artery disease; COPD: chronic obstructive pulmonary disease; IVS: interventricular septum; LA: left atrium diameter; LVDD: left ventricle diastolic diameter; LVEF: left ventricle ejection fraction; LVSD: left ventricle systolic diameter; MVP: mitral valve prolapse; n: number; PW: posterior wall.

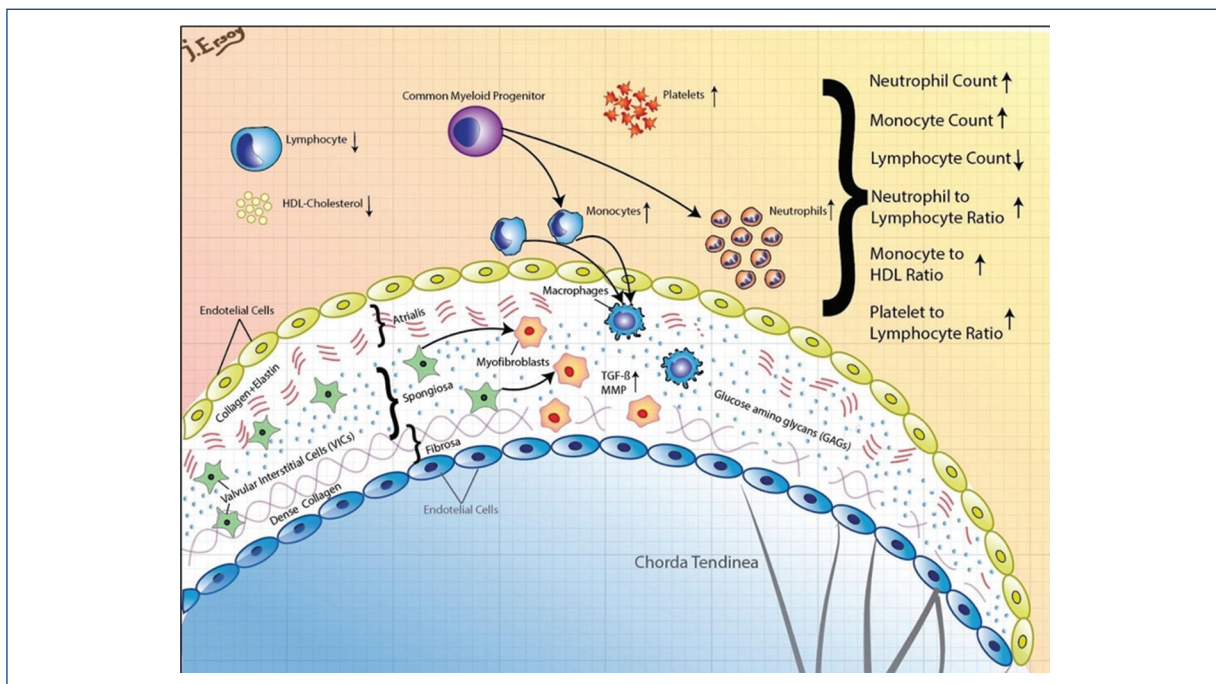
**Figure 1.** According to our results, pathophysiology and cellular changes of mitral valve prolapse.

Table 2. Comparing laboratory parameters between MVP and control groups

Parameters	MVP (n = 461)	Control (n = 459)	p-value
Fasting blood glucose, mg/dl	90.9 (81-100)	92.5 (83-103)	0.124 [#]
Serum creatinine, mg/dl	0.65 (0.54-0.80)	0.74 (0.6-0.9)	0.062 [#]
TC, mg/dl	167.5 ± 30.9	161.4 ± 30.1	0.003*
HDL-C, mg/dl	41 (37-45)	43 (38-48)	<0.001**
LDL-C, mg/dl	115.6 ± 33.1	106.7 ± 29.4	0.016*
TG, mg/dl	145 (121-168)	135 (110-165)	0.065* [#]
Hemoglobin, g/dl	13.21 ± 1.39	13.19 ± 1.62	0.888
Platelet, 10 ⁹ /mm ³	249 (186-283)	231 (215-289)	<0.001**
Mean platelet volume	9.84 ± 1.51	9.80 ± 1.54	0.523
White blood cell count, µl	7.6 (6.8-8.5)	7.4 (6.4-9.1)	0.665 [#]
Neutrophil count, µl	4960 (3900-6780)	4200 (3800-5600)	<0.001**
Lymphocyte count, µl	2030 (1530-2600)	2400 (1950-2700)	<0.001**
Monocyte count, µl	600 (500-800)	510 (400-700)	<0.001**
MHR	14.9 (11.9-18.6)	12.2 (9.4-17.3)	0.003* [#]
LMR	3.75 (2.75-5.09)	4.06 (3.12-4.83)	0.016* [#]
C-reactive protein, mg/dl	0.71 ± 0.50	0.67 ± 0.33	<0.001*
NLR	2.488 (1.72-4.51)	1.857 (1.49-2.38)	<0.001**
PLR	122.4 (85-171)	104.4 (85-130)	<0.001**

*p < 0.05 was considered statistically significant.

[#]Mann–Whitney U-test. MHR: monocyte-to-HDL ratio; NLR: neutrophil-to-lymphocyte ratio; LMR: lymphocyte-to-monocyte to ratio; PLR: platelet-to-lymphocyte ratio; TC: total cholesterol; LDL-C: low-density lipoprotein cholesterol; HDL-C: high-density lipoprotein cholesterol; TG: triglyceride.

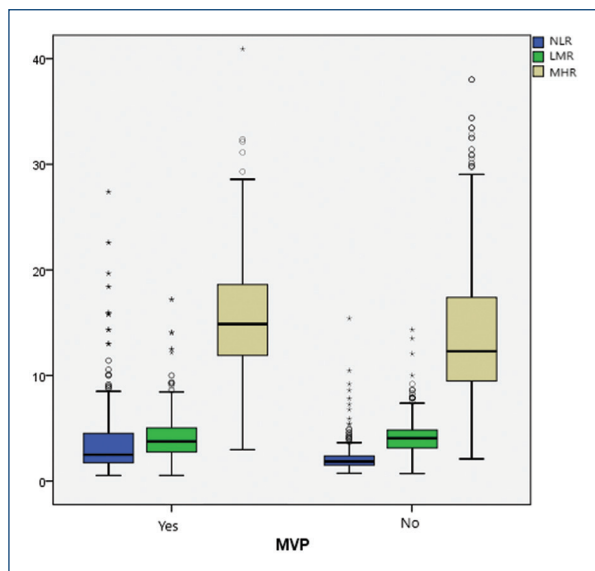


Figure 2. The box plot of the neutrophil/lymphocyte ratio, monocyte/high-density lipoprotein ratio, and lymphocyte/monocyte ratio results.

studies^{15,16}. In a larger study, MVP was more common in women than in men¹⁷. When the results of our study are examined, it is seen that the average age of the MVP group was 33.7 years and the majority of the group was female (68%). These results are in line with those of the previous studies. In clinical practice, we often see patients with this profile. It is known that mitral regurgitation is the most frequent complication of MVP, and it is the most important parameter affecting the clinical course of the disease. As expected, we found much more mitral regurgitation in the MVP group compared to the control group. In addition, LA dimension was significantly higher in the MVP group in our study, which may be due to MVP and mitral regurgitation. Apart from this, there were differences in echo parameters that we had difficulty in explaining the clinical significance due to the large number of our patients.

As known from the previous studies, HDL-C has anti-inflammatory effects, stimulates nitric oxide, and

Table 3. Univariate and multivariate logistic regression analysis for the presence of MVP

Variables	Univariate p-value OR (95% CI)	Multivariate p-value OR (95% CI)
Age	0.981 1.00 (0.98-1.01)	0.803 1.002 (0.989-1.014)
Gender (male)	0.945 1.07 (0.92-1.12)	0.662 0.936 (0.694-1.261)
White blood cell	0.007 0.931 (0.88-0.98)	-
Neutrophil	<0.001 1.24 (1.15-1.33)	-
Lymphocyte	<0.001 -0.59 (0.49-0.705)	-
Platelet	0.019 1.002 (1-1.004)	-
MHR	<0.001 -0.242 (0.12-0.48)	0.070 0.182 (0.12-0.35)
NLR	<0.001 1.52 (1.37-1.69)	<0.001 1.058 (1.047-1.072)*
LMR	<0.001 0.242 (0.12-0.489)	0.027 1.046 (1.021-1.062)*
PLR	<0.001 0.994 (0.992-0.997)	0.003 1.015 (1.012-1.019)*

*p < 0.05 was considered statistically significant.

-2 Log likelihood= 611.450, R²= 0.514 (Cox&Snell), 0.685 (Nagelkerke), X²(8)= 32.97, p < 0.001 (Hosmer&Lemeshow test).. OR: odds ratio; MHR: monocyte-to-HDL ratio; NLR: neutrophil-to-lymphocyte ratio; LMR: lymphocyte-to-monocyte ratio; PLR: platelet-to-lymphocyte ratio.

promotes angiogenesis^{18,19}. Chang et al. detected decreased HDL-C in valvular heart disease, which is consistent with our results²⁰. We found lower HDL-C, and higher TG and LDL-C levels in the MVP group and these findings were consistent with earlier studies^{21,22}. A possible explanation may be that TG-rich lipoproteins and LDL-C may promote an inflammatory response causing upregulation of TGF- β and metalloproteinase levels²³, and in the end result in valve degeneration. TGF- β is an essential factor for developing cardiac and valvular fibrosis. Monocyte reproduction is promoted by TGF- β in non-syndromic MVP²⁴ and infiltrated monocytes turn into macrophages provoking myxomatous degeneration²⁵. In our study, monocytes were higher in the MVP group, but this was not statistically significant. Furthermore, platelet counts were higher in our MVP patients. This result may be explained by the fact that inflammatory mediators stimulate megakaryocytic proliferation and lead to relative thrombocytosis. Although endothelial deformation of the valve surface plays a role in platelet dysfunction, it can cause overexpression, especially in mitral regurgitation²⁶.

Prior studies showed a correlation between 12 cardiovascular diseases and neutrophil count²⁷. As is known, neutrophil levels increase with inflammation. We found a significant neutrophil increase in the MVP group. This finding correlated with previous observations^{7,28}. In our study, we observed that the mean CRP value was significantly higher in MVP patients

compared to the control group, as expected. In reviewing the literature, we found a strong association between NLR and inflammation in cardiac and non-cardiac disorders^{8,29-31}. Several reports have shown that higher NLR levels are linked with increased inflammation in many cardiac diseases, such as coronary artery disease⁹ and rheumatic valvular disease³². In our study, we found significantly higher NLR in the MVP group and this significance persisted in logistic regression analysis. Although the odds ratio of NLR is not very high, we think that NLR is an independent predictor of MVP presence. To the best of our knowledge, this is the first study that evaluated a NLR association with MVP. NLR may be a predictor and prognostic determinant for MVP.

Furthermore, according to our results, PLR and MHR were elevated with MVP patients compared to the control group. Similar to our results, MHR was significantly higher in the Abacioğlu study conducted in our country and in which 82 MVP patients were evaluated recently³³. In this study, we could not make a more detailed evaluation due to the lack of information about PLR, LMR, and NLR ratios, but perhaps similar results would have been seen if they were. PLR is a recent hematological inflammatory and prothrombotic marker. It was found to be associated with cardiovascular disorders and valve thrombosis^{7,34}. The previous studies have demonstrated that MVP has an association with ischemic events³⁵. This relationship may be partly explained by endothelial deformation and poor platelet

function while increasing the count. PLR elevation may support this mechanism. In a recent study, MHR has been showed to be a marker of inflammation and oxidative stress. This new parameter has been found to be a poor prognostic marker in cardiac and non-cardiac diseases^{10,36,37}. According to our study, MHR elevation was statistically significant in MVP patients compared to the control group. This finding corroborates the ideas of Demir et al.¹¹ who found that MHR was significantly higher in rheumatic valvular disease. Our study provides the first data to consider the relationship between inflammatory parameters obtained from CBC and MVP. These findings may help with further implications in understanding the pathogenesis of MVP.

Conclusions

The main goal of the current study was to determine the association between MVP and frequently used inflammatory markers. From the results of our study, we found that MHR, NLR, and PLR were significantly higher, and LMR was significantly lower in MVP patients compared to the control group. To the best of our knowledge, these findings are the first data for these markers in MVP and represent compelling results. These parameters may be used as a simple, low-cost, reproducible tool to detect inflammation in MVP patients. Nonetheless, we need further prospective, randomized, large-scale studies involving other inflammatory biomarkers.

Limitations

The major limitation of this study was the retrospective and single-center design. It also lacks an evaluation of the prognostic value of NLR, PLR, and MHR on adverse outcomes. In addition, we have no data on other inflammatory markers such as interleukin-6 and tumor necrosis factor- α . MVP can be due to connective tissue disease, but there was no information about this etiology in our dataset. Another limitation was the lack of a classification of MVP (familial or syndromic), which was not analyzed. Moreover, no more detailed echocardiographic evaluation was done because our study is retrospective. Another limitation was the lack of the body mass index data of the participants.

Funding

The study did not have any supporters.

Conflicts of interest

The authors declare that they have no conflicts of interest regarding the publication of this paper.

Ethical disclosures

Protection of human and animal subjects. The authors declare that no experiments were performed on humans or animals for this study.

Confidentiality of data. The authors declare that no patient data appear in this article.

Right to privacy and informed consent. The authors declare that no patient data appear in this article.

Availability of data and material

The datasets used and analyzed during the current study are available from the corresponding author on reasonable request.

References

1. Parwani P, Avierinos JF, Levine RA, Delling FN. Mitral valve prolapse: multimodality imaging and genetic insights. *Prog Cardiovasc Dis*. 2017;60:361-9.
2. Freed LA, Benjamin EJ, Levy D, Larson MG, Evans JC, Fuller DL, et al. Mitral valve prolapse in the general population: the benign nature of echocardiographic features in the Framingham heart study. *J Am Coll Cardiol*. 2002;40:1298-304.
3. Bonow RO, Carabello BA, Chatterjee K, de Leon AC, Faxon DP, Freed MD, et al. 2008 focused update incorporated into the ACC/AHA 2006 guidelines for the management of patients with valvular heart disease: a report of the American college of cardiology/American heart association task force on practice guidelines (writing committee to. *J Am Coll Cardiol*. 2008;52:e1-142.
4. Devereux RB, Kramer-Fox R, Shear MK, Kligfield P, Pini R, Savage DD. Diagnosis and classification of severity of mitral valve prolapse: methodologic, biologic, and prognostic considerations. *Am Heart J*. 1987;113:1265-80.
5. Luxereau P, Dorent R, De Gevigney G, Bruneval P, Chomette G, Delahaye G. Aetiology of surgically treated mitral regurgitation. *Eur Heart J*. 1991;12:2-4.
6. Levine RA, Hagège AA, Judge DP, Padala M, Dal-Bianco JP, Aikawa E, et al. Mitral valve disease-morphology and mechanisms. *Nat Rev Cardiol*. 2015;12:689.
7. Gürsoy OM, Karakoyun S, Kalçık M, Gökdeniz T, Yesin M, Gündüz S, et al. Usefulness of novel hematologic inflammatory parameters to predict prosthetic mitral valve thrombosis. *Am J Cardiol*. 2014;113:860-4.
8. Tamhane UU, Aneja S, Montgomery D, Rogers EK, Eagle KA, Gurm HS. Association between admission neutrophil to lymphocyte ratio and outcomes in patients with acute coronary syndrome. *Am J Cardiol*. 2008;102:653-7.
9. Kaya H, Ertuş F, İslamoğlu Y, Kaya Z, Atılğan ZA, Çil H, et al. Association between neutrophil to lymphocyte ratio and severity of coronary artery disease. *Clin Appl Thromb*. 2014;20:50-4.
10. Cetin MS, Cetin EH, Kalender E, Aydin S, Topaloglu S, Kisacik HL, et al. Monocyte to HDL cholesterol ratio predicts coronary artery disease severity and future major cardiovascular adverse events in acute coronary syndrome. *Hear Lung Circ*. 2016;25:1077-86.
11. Demir V, Samet Y, Akboga MK. Association of lymphocyte-monocyte ratio and monocyte-to-high-density lipoprotein ratio with the presence and severity of rheumatic mitral valve stenosis. *Biomark Med*. 2017;11:657-63.
12. Yayla Ç, Akboga MK, Canpolat U, Gayretli Yayla K, Kuyumcu MS, Bayraktar F, et al. The association of the platelet-to-lymphocyte ratio with mitral annular calcification. *Scand Cardiovasc J*. 2015;49:351-6.

13. Pamukcu HE, Aker M. Association between monocyte to HDL cholesterol ratio and mitral annulus calcification. *J Surg Med.* 2019;3:44-8.
14. Delling FN, Vasan RS. Epidemiology and pathophysiology of mitral valve prolapse: new insights into disease progression, genetics, and molecular basis. *Circulation.* 2014;129:2158-70.
15. Hayek E, Gring CN, Griffin BP. Mitral valve prolapse. *Lancet.* 2005;365:507-18.
16. Flack JM, Kvasnicka JH, Gardin JM, Gidding SS, Manolio TA, Jacobs DR Jr., et al. Anthropometric and physiologic correlates of mitral valve prolapse in a biethnic cohort of young adults: the CARDIA study. *Am Heart J.* 1999;138:486-92.
17. Avierinos JF, Gersh BJ, Melton Iii LJ, Bailey KR, Shub C, Nishimura RA, et al. Natural history of asymptomatic mitral valve prolapse in the community. *Circulation.* 2002;106:1355-61.
18. Navab M, Reddy ST, Van Lenten BJ, Fogelman AM. HDL and cardiovascular disease: atherogenic and atheroprotective mechanisms. *Nat Rev Cardiol.* 2011;8:222.
19. Murphy AJ, Chin-Dusting JP, Sviridov D, Woollard KJ. The anti inflammatory effects of high density lipoproteins. *Curr Med Chem.* 2009;16:667-75.
20. Chang FJ, Yuan HY, Hu XX, Ou ZJ, Fu L, Lin ZB, et al. High density lipoprotein from patients with valvular heart disease uncouples endothelial nitric oxide synthase. *J Mol Cell Cardiol.* 2014;74:209-19.
21. Gerber Y, Goldbourt U, Feinberg MS, Segev S, Harats D. Are triglyceride-rich lipoproteins associated with aortic valve sclerosis?: a preliminary report. *Atherosclerosis.* 2003;170:301-5.
22. Ghani M, Burwash IG, Chan KL. Cholesterol and triglyceride levels in congenital bicuspid aortic valve: risk factors for aortic stenosis. *Circulation.* 1998;98:699.
23. Edep ME, Shirani J, Wolf P, Brown DL. Matrix metalloproteinase expression in nonrheumatic aortic stenosis. *Cardiovasc Pathol.* 2000;9:281-6.
24. Rizzo S, Basso C, Lazzarini E, Celeghin R, Paolin A, Gerosa G, et al. TGF-beta1 pathway activation and adherens junction molecular pattern in nonsyndromic mitral valve prolapse. *Cardiovasc Pathol.* 2015;24:359-67.
25. Hulin A, Anstine LJ, Kim AJ, Potter SJ, DeFalco T, Lincoln J, et al. Macrophage transitions in heart valve development and myxomatous valve disease. *Arterioscler Thromb Vasc Biol.* 2018;38:636-44.
26. Tse HF, Lau CP, Cheng G. Relation between mitral regurgitation and platelet activation. *J Am Coll Cardiol.* 1997;30:1813-8.
27. Shah AD, Denaxas S, Nicholas O, Hingorani AD, Hemingway H. Neutrophil counts and initial presentation of 12 cardiovascular diseases: a CALIBER cohort study. *J Am Coll Cardiol.* 2017;69:1160-9.
28. Gibson PH, Cuthbertson BH, Croal BL, Rae D, El-Shafei H, Gibson G, et al. Usefulness of neutrophil/lymphocyte ratio as predictor of new-onset atrial fibrillation after coronary artery bypass grafting. *Am J Cardiol.* 2010;105:186-91.
29. Ethier JL, Desautels D, Templeton A, Shah PS, Amir E. Prognostic role of neutrophil-to-lymphocyte ratio in breast cancer: a systematic review and meta-analysis. *Breast Cancer Res.* 2017;19:2.
30. Delcea C, Buzea CA, Dan GA. The neutrophil to lymphocyte ratio in heart failure: a comprehensive review. *Rom J Intern Med.* 2019;57:296-314.
31. Balta S, Demirkol S, Unlu M, Arslan Z, Celik T. Neutrophil to lymphocyte ratio may be predict of mortality in all conditions. *Br J Cancer.* 2013;109:3125-6.
32. Polat N, Yildiz A, Yuksel M, Bilik MZ, Aydin M, Acet H, et al. Association of neutrophil-lymphocyte ratio with the presence and severity of rheumatic mitral valve stenosis. *Clin Appl Thromb.* 2014;20:793-8.
33. Abacioglu OO. Monocyte to high-density lipoprotein ratio: a prognostic factor for mitral valve prolapse? *Bratisl Lek Listy.* 2020;121:151-3.
34. Yüksel M, Yıldız A, Oylumlu M, Akyüz A, Aydın M, Kaya H, et al. The association between platelet/lymphocyte ratio and coronary artery disease severity. *Anatol J Cardiol.* 2016;15:640.
35. Walsh PN, Kansu TA, Corbett JJ, Savion PJ, Goldburgh WP, Schatz NJ. Platelets, thromboembolism and mitral valve prolapse. *Circulation.* 1981;63:552-9.
36. Kanbay M, Solak Y, Unal HU, Kurt YG, Gok M, Cetinkaya H, et al. Monocyte count/HDL cholesterol ratio and cardiovascular events in patients with chronic kidney disease. *Int Urol Nephrol.* 2014;46:1619-25.
37. Selcuk M, Yildirim E, Saylik F. Comparison of monocyte with high density lipoprotein cholesterol ratio in dipper and nondipper hypertensive patients. *Biomark Med* 2019;13:1289-96.